

THE 39TH EACTS ANNUAL MEETING

DESIGNING THE FUTURE

INNOVATE, DISCOVER, EDUCATE

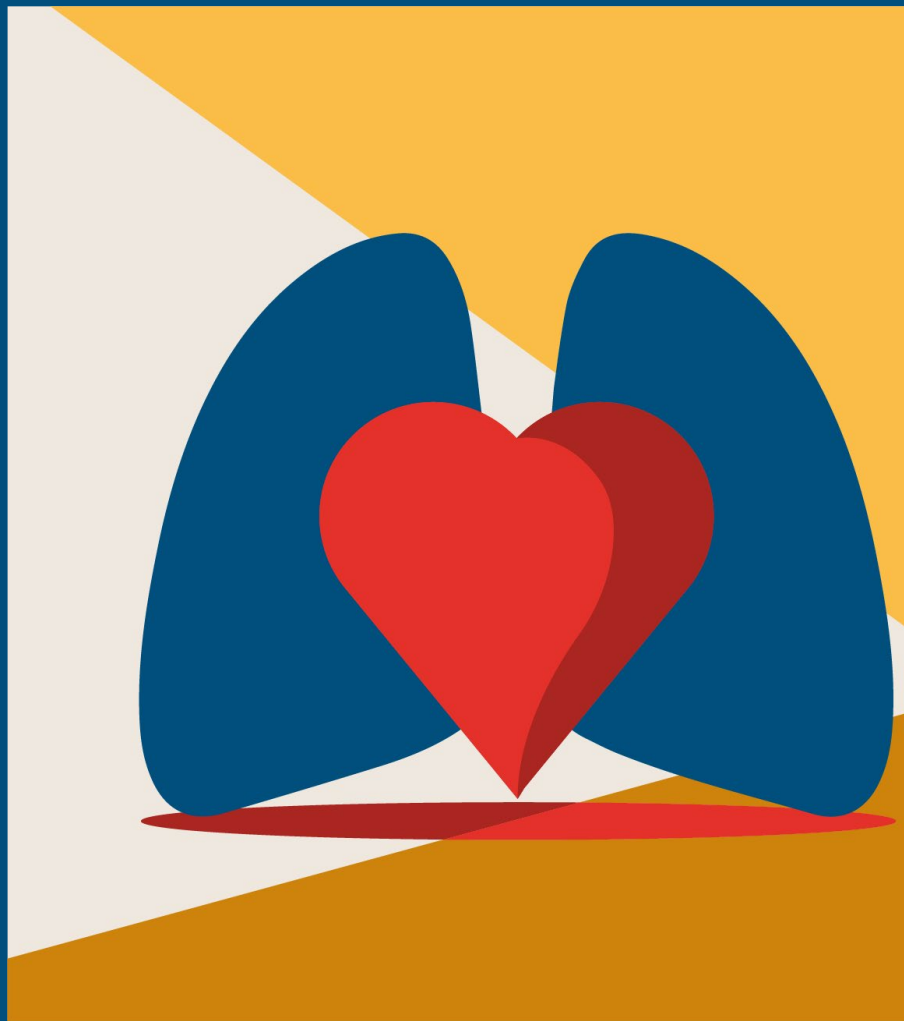
8 – 11 October 2025 | Copenhagen, Denmark

X @EACTS #EACTS2025 #EACTS

www.eacts.org



EACTS
EUROPEAN ASSOCIATION FOR
CARDIO-THORACIC SURGERY



EACTS EXHIBITOR PROSPECTUS

The Venue



8 – 11 OCTOBER 2025



**Bella Center,
Copenhagen, Denmark**



[Bella Center Copenhagen](#)



[Google Maps](#)



EACTS House
Madeira Walk, Windsor
Berkshire SL4 1EU



maesie.williams@eacts.co.uk

1 Big
Hall

5 min
from



8 min
from
Central



TRADE EXHIBITION

Reasons to Exhibit

Networking Opportunities

Connect with industry peers, potential clients, and decision-makers in your field. Build meaningful relationships and explore collaborations.

Market Visibility

Boost your company's visibility and reputation in the sector. Get noticed by a wide and relevant audience.

Showcase Your Products/Services

Present your latest offerings, innovations, and solutions to a targeted audience eager to discover new products.

Knowledge Exchange

Learn from industry experts, gain insights, and stay up to date with the latest trends and developments.

Tailored Support

Our team is committed to ensuring your participation is seamless and successful. We're here to support you every step of the way.

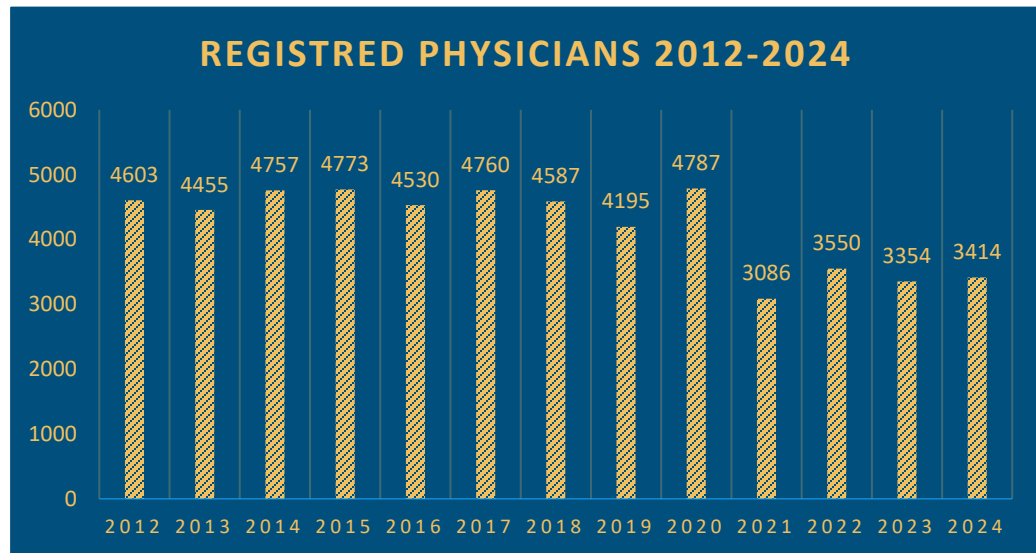
The EACTS trade exhibition is an essential and effective way to keep up with the latest advancements in cutting-edge technology, innovative products, and developments within the cardiothoracic field. For participating companies, having an exhibition stand offers the opportunity to connect with key industry stakeholders in one convenient location, showcasing new products and generating interest from both potential clients and existing customers.

Our trade show consistently attracts qualified attendees, many of whom have purchasing authority. Exhibitors and visitors appreciate the opportunity for face-to-face interactions and the excitement of new product introductions.



STATS 2024

Join our dedicated community!

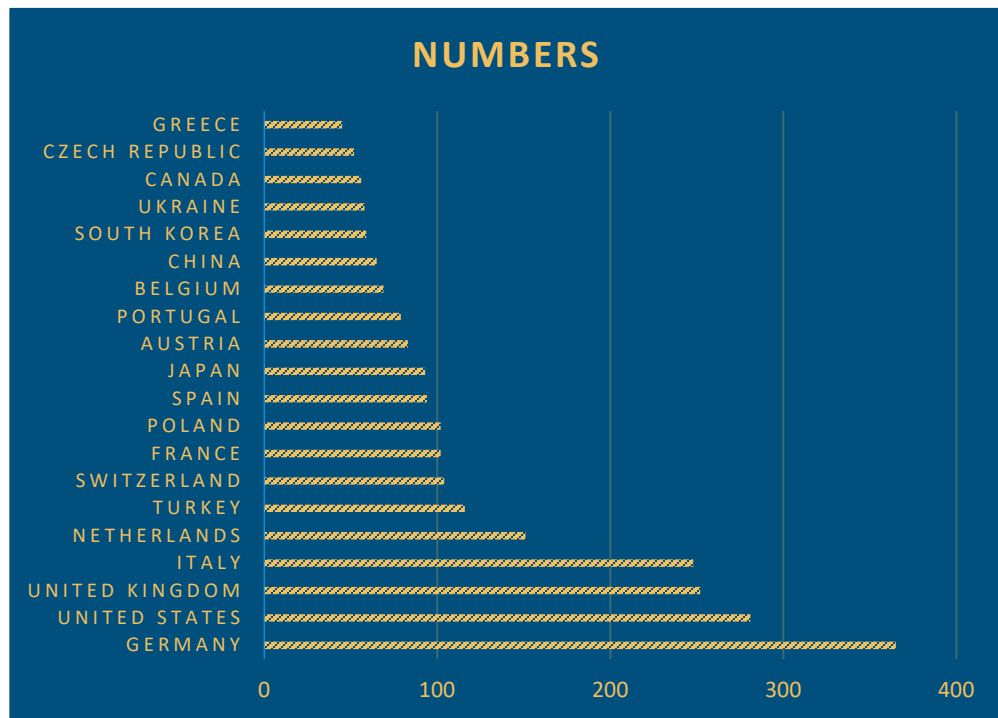


OUR NUMBERS

| | |
|---------------------|-------------|
| HCPs | 3414 |
| Exhibition Visitors | 324 |
| Industry Badges | 1273 |
| Video on Demand | 66 |
| TOTAL | 5077 |



WHO VISITED



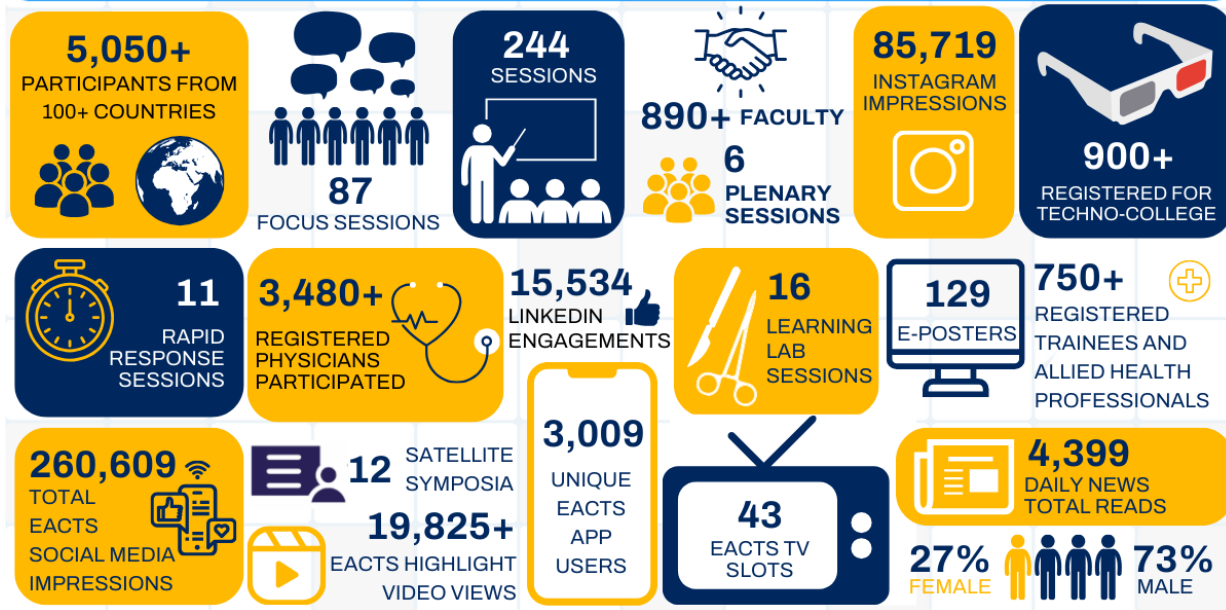
The Top 5 Countries with the Most Attendees at EACTS 2024:

1. Germany
2. USA
3. UK
4. Italy
5. Netherlands



A SUCCESSFUL YEAR!

THE 38TH EACTS ANNUAL MEETING IN NUMBERS



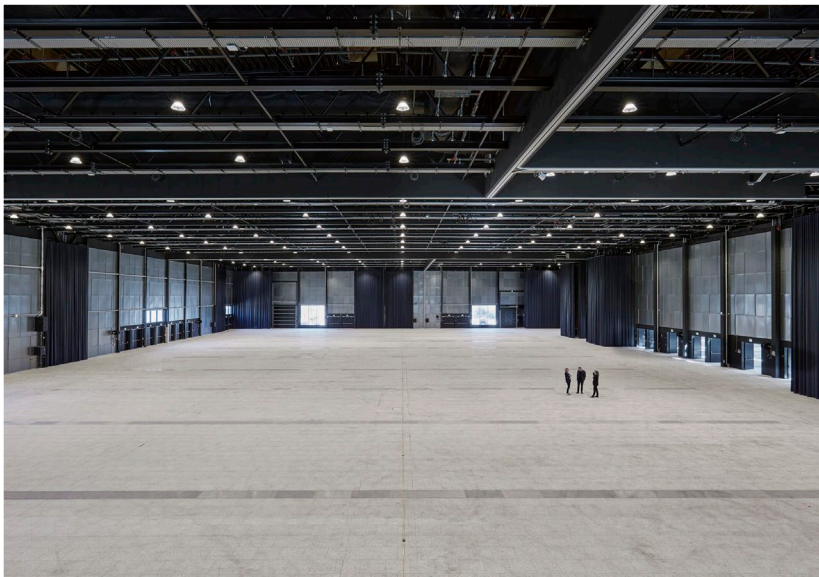
Exhibitors
85

Square Meters
1914

Countries
19



ALL IN ONE HALL



HALL D - For further details about the event venue, please refer to the official website: <https://www.bellacenter.dk/en>

Hall D, located on the ground floor of the Bella Center, will host the Exhibition.

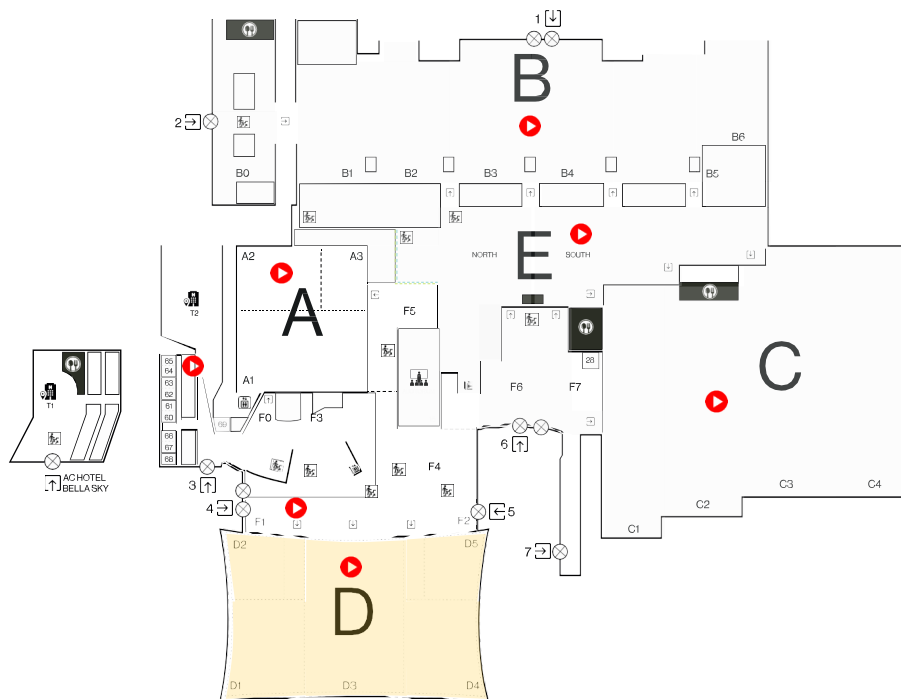
The floor plan and stand application pack will be **available** and shared with the Industry on **28th March 2025**. Exhibitors registered in our database will be notified when applications are open.

Conveniently situated just five minutes from Copenhagen International Airport and a mere eight minutes from the city center, the Bella Center offers unparalleled accessibility, whether you're arriving by plane, train, or car.

The catering area will also be located in the same area.



GROUND FLOOR

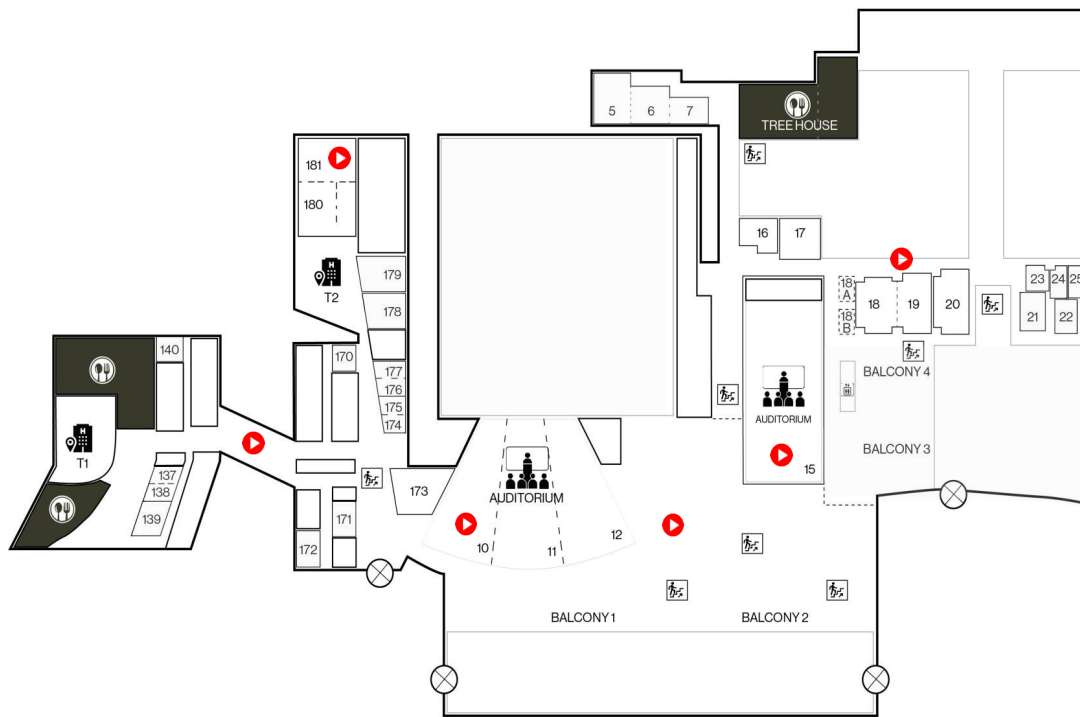


**BELLA
CENTER**
COPEN
HAGEN

THE 39TH EACTS ANNUAL MEETING | 8 – 11 OCTOBER 2025



FIRST FLOOR



**BELLA ·
CENTER**
COPEN
HAGEN

THE 39TH EACTS ANNUAL MEETING | 8 – 11 OCTOBER 2025



ASSIGNMENT OF STAND SPACE

Application Guidelines:

To request stand space, please complete the Stand Application Form provided in the Stand Application Pack which will be issued the 28th March 2025.

Applications will be processed on a first-come, first-served basis, in the order they are received.

If your preferred stand location is already reserved by another company, we will inform you. Please note that multiple companies often express interest in the same stands.

While EACTS strives to accommodate exhibitor preferences for stand location, we cannot guarantee specific placements. In cases of space or other logistical conflicts, EACTS reserves the right to assign space to exhibitors, adjust the floor plan, or relocate exhibits as needed, both before and during the exhibition.

To ensure your application is considered, please submit a signed application form in scanned PDF format. We do not accept applications via email alone.



STAND PRICING

The cost of renting exhibition space is **€660 per square meter (m²), plus Danish VAT, if applicable**. The minimum space available for hire is 9m². Stand sizes are available in clusters of 9m², 18m², and 27m² in inline locations, with 36m² being the starting size for island stands.

Please note, **the rental fee only covers the bare floor space**—it does not include carpeting, furniture, installations, or electricity. For **9m² stands, a shell scheme is mandatory**.

Two shell scheme options will be available for order at an additional cost through us and are compulsory for 9m² stands. Stands measuring 18m² and 27m² can be fully customized. Exhibitors can choose to order from the Bella Center [webshop](#) ("Nordic Turnkey" or "Wood Turnkey") or appoint an external contractor. Please refer to this [webshop](#) link.

The stand rentals includes:

- a. General security
- b. Fire protection
- c. General lightning
- d. Ailes' cleaning
- e. Normal waste disposal

SPACE ONLY

- a. Island stands - 4m max. height
- b. Inline stand (18m² and more) - 2.5m max. height

PACKAGE 1

- a. Shell Scheme Structure
- b. Fascia Board (one per open side)
- c. Carpet (35232 Light Grey)*
- d. 1 spotlight per 3m²
- e. 1 power 2,3 KW - 1 socket with 3 plugs
- f. Fascia signage text (Arial black) / logo (just one 3mt fascia)**

Price per 9m² - 611.73€ + VAT

PACKAGE 2

- a. Shell Scheme Structure
- b. Fascia Board (one per open side)
- c. Carpet (35232 Light Grey)*
- d. 1 spotlight per 3m²
- e. 1 power 2,3 KW – 1 socket with 3 plugs
- f. Waste basket x1
- g. White London table x 1
- h. White Chairik 107 chair x 3
- i. Fascia signage text (Arial black) / logo (just one 3mt fascia)**

Price per 9m² - 731.07€ + VAT

Please Note

If you wish to order a colour other than light grey for your Shell Scheme stand, please visit the [webshop](#). An additional cost will apply.

** Please email [EACTS - Industry](#) to discuss the personalisation and location of your fascia.



PRELIMINARY EXHIBITION SCHEDULE

Dates & Opening Hours

| Day | Date | Registration & Information | Scientific Sessions | Satellites | Exhibition |
|-----------|------------|----------------------------|---------------------------------|---------------|---|
| Wednesday | 8 October | 08.00 – 18.00 | TECHNO-COLLEGE 09.00 – 18.00 | - | - |
| Thursday | 9 October | 07.00 – 18.00 | 08.30 – 18.45 | 12.00 – 13.30 | 09.00 – 18.30 Welcome Reception 17.30 – 19.00 |
| Friday | 10 October | 07.45 – 18.00 | 08.30 – 18.30 | 12.00 – 13.30 | 09.00 – 17.00 |
| Saturday | 11 October | 07.45 – 12.00 | 08.30 – 13.45 | | 09.00 – 12.00 |

N.B. Times may be subject to change.



PRELIMINARY TIMETABLE

Construction & Dismantling of Exhibition Stands

| Day | Date | Time | Type of Stand |
|------------------|-----------|---------------|--|
| Tuesday | 7 October | 08.00-13.00 | Move-in; Space-only "Island" stands; self-builds in inline locations. |
| Tuesday | 7 October | 13.00 – 19.00 | Build up; Space only "island" stands and self- builds in inline locations. |
| Wednesday | 8 October | 08.00 – 20.00 | Build-up; Space only "Island" stands and self- builds in inline locations. |
| Wednesday | 8 October | 12.00 – 20.00 | Build up; Shell scheme/Inline exhibitors |
| Thursday | 9 October | 09.00 | All stands must be operational |
| Thursday | 9 October | 09.00 | Exhibition Opening |
| Thursday | 9 October | 17.30 – 19.00 | Welcome Reception |

N.B. Times may be subject to change.

| Day | Date | Time |
|-----------------|------------|---------------|
| Saturday | 11 October | 12.00 – 20.00 |
| Sunday | 12 October | 08.00 – 12.00 |

No prior dismantling is allowed. All exhibits, stand fitting and display materials must be removed by 12.00 on Sunday 12 October. Exhibitors will be charged for the unauthorised use of additional time and for the disposal of any materials remaining in the halls after the deadline above, including any consequent venue hire costs.



DEADLINES & SPONSORSHIP

| | |
|---|---|
| The floor Plan and Application for the Exhibition Stand released | 28 th March 2025 |
| Deadline for the receipt of the Application for the Exhibition Stand | As soon as possible, on a first-come-first-served basis |
| Confirmation of stand allocation | Within the next 10 working days after receipt of the Application for the Exhibition Stand |
| 100% payment for exhibition space | within 14 days of the date of the invoice issued by the Organisers |
| Online circulation of the Exhibition Service Manual & webshop link | 9 th May 2025 |
| Free-build stand design plans to be submitted | 4 th August 2025 |
| Order forms for additional technical requirements, Exhibitor Services Website | 1 st September 2025 |

BEYOND THE STAND

The following opportunities will be offered to exhibitors at the EACTS 39th Annual Meeting:

- Satellite Symposia
- Techno-College Sponsorship
- Advertising & Communication
- EACTS TV
- Promotional Signage
- Daily News
- Email Blast
- EACTS Website
- EACTS App

If you have questions about these opportunities, please contact industry@eacts.co.uk.

